

PLAT CERTIFIED CORRECT:

Neal B. Wagner
Reg. Professional Land Surveyor
Arkansas No. 154

FILED
FT. SMITH DIST.
39 JUL 29 PM 1 56
CIR. CLERK SEB. CO.
1591B

PLANNING COMMISSION APPROVAL
Date 7/29/99
Chairman
Secretary

FILED FOR RECORD this 29th Day of July
19 99 at 1:56 O'clock P. M.
Clerk and Ex-Officio Recorder
by John Arndt

**THIS PLAT FILED for the purpose of replatting
THE HIGHLANDS on RILEY FARM—
LOTS 15,16&17 into LOTS 15A & 17A**

The right-of-way as shown on this plat is hereby dedicated to the City of Fort Smith ("City") for public use. The easements shown on this plat are hereby dedicated to the City for Utility, drainage, access and other purposes. Any easement designated as a "utility easement" is dedicated to the City for the installation, operation and maintenance of City owned utilities and utilities, including cable TV, operated by utility companies having a franchise agreement with the City. The City and City franchised utility companies shall have access through and along designated easements for their personnel and equipment at all times with the authority to cut down and keep trimmed from the dedicated easements trees, hedges and shrubs that may interfere with or endanger such utilities. In the event that fencing of individual lots is desired, gates that provide free ingress and egress to, and within, the dedicated easement shall be provided.

ALLOTTERS: **PINEMEADOW, INC.**

STATE OF ARKANSAS
COUNTY OF SEBASTIAN: Sworn and subscribed by me
this 28th Day of July, 1999.
Notary Public, John Arndt
My Commission Expires 8-1-2008

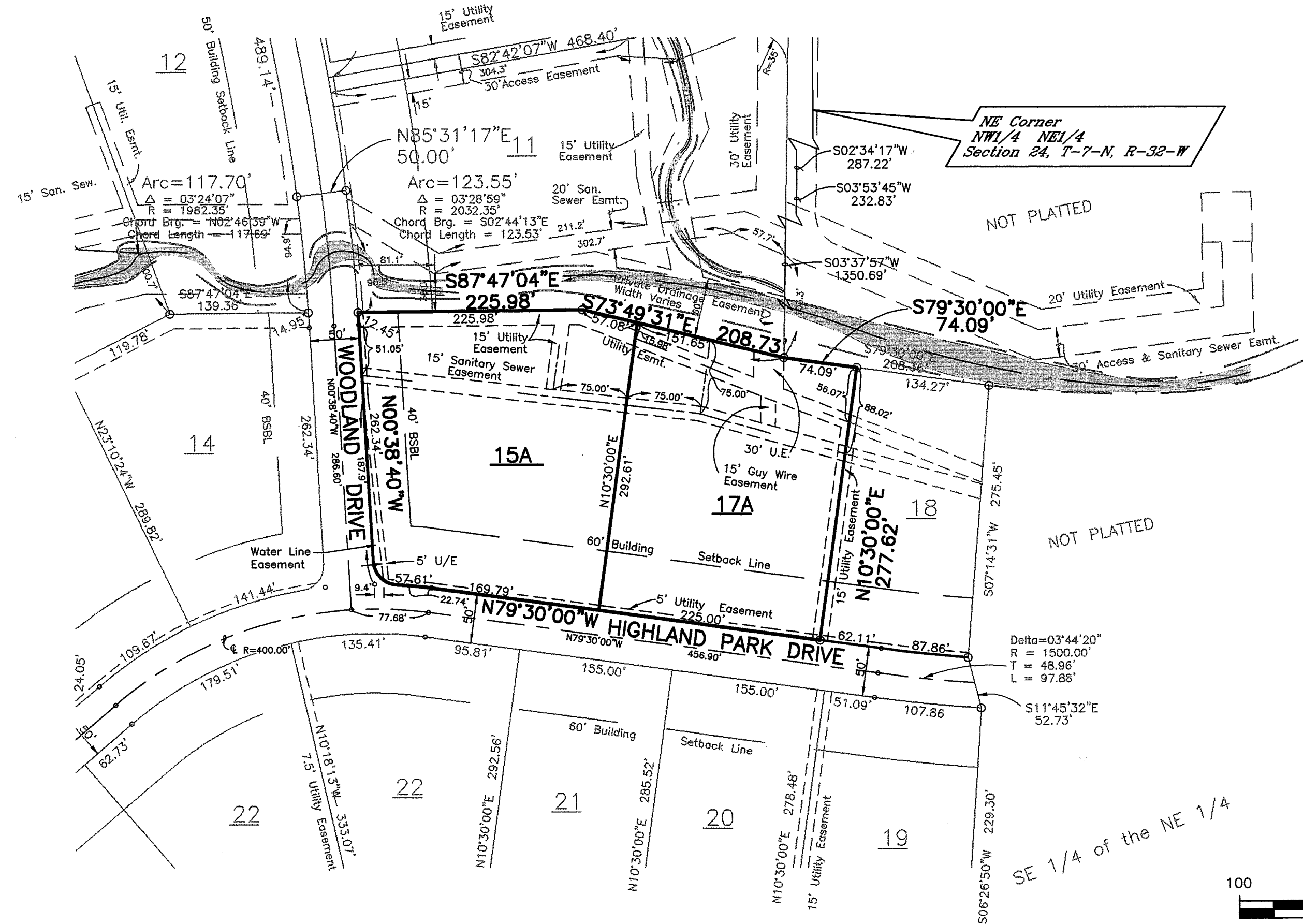
LEGEND

BSL	Building Setback Line	—————
UE	Utility Easement	-----
Drq Esm't	Drainage Easement	- - - - -
S.S Esm't	Sanitary Sewer Easement	- - - - -
R/W	Right-of-Way	————— R/W

- NOTES:
- 1/2" Iron Pins Set at Property Corners
 - All Right of Way Return Radii 25.0'.
 - All Distances along Curves are Chord Distances Unless Otherwise Noted.
 - Basis of Bearing— Plat of The Highlands on Riley Farm as filed June 7, 1999.

LEGAL DESCRIPTION

THE HIGHLANDS ON RILEY FARM, LOTS 15,16&17, FORT SMITH, SEBASTIAN COUNTY, ARKANSAS as filed for record May 7, 1999.



THE HIGHLANDS on RILEY FARM — LOTS 15A&17A

A Replat of Lot 15, 16 & 17, THE HIGHLANDS on RILEY FARM, FORT SMITH, SEBASTIAN COUNTY, ARKANSAS



MICKLE-WAGNER-COLEMAN, INC.
Engineers Surveyors Consultants
P.O. Box 1507 Fort Smith, Arkansas
Scale: 1" = 100' July, 1999

Owner and Developer
PINEMEADOW, INC.
P.O. Box 180547
Fort Smith, Arkansas