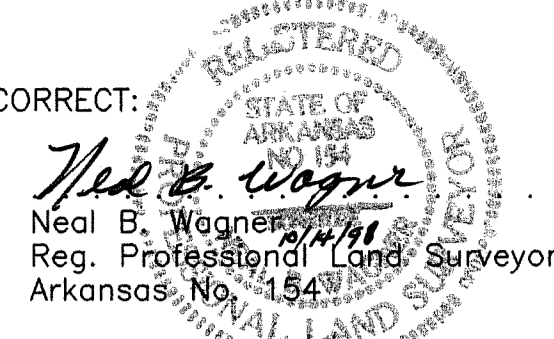


PLAT CERTIFIED CORRECT:



Neal E. Wagner
Reg. Professional Land Surveyor
Arkansas No. 1547

PLANNING COMMISSION APPROVAL

Date: 10-15-98

Chairman: [Signature]

Secretary: [Signature]

FILED FOR RECORD this 15th Day of October, 1998, at 4:38 O'clock P.M.

Clerk and Ex-Officio Recorder

[Signature]

THIS PLAT FILED for the purpose of placing on record
HIGH POINTE ON RILEY FARM, LOTS 1 THRU 12

The right-of-way as shown on this plat is hereby dedicated to the City of Fort Smith ("City") for public use. The easements shown on this plat are hereby dedicated to the City for Utility, drainage, access and other purposes. Any easement designated as a "utility easement" is dedicated to the City for the installation, operation and maintenance of City owned utilities and utilities, including cable TV, operated by utility companies having a franchise agreement with the City. The City and City franchised utility companies shall have access through and along designated easements for their personnel and equipment at all times with the authority to cut down and keep trimmed from the dedicated easements trees, hedges and shrubs that may interfere with or endanger such utilities. In the event that fencing of individual lots is desired, gates that provide free ingress and egress to, and within, the dedicated easement shall be provided.

PINEMEADOW, INC.

ALLOTTERS:

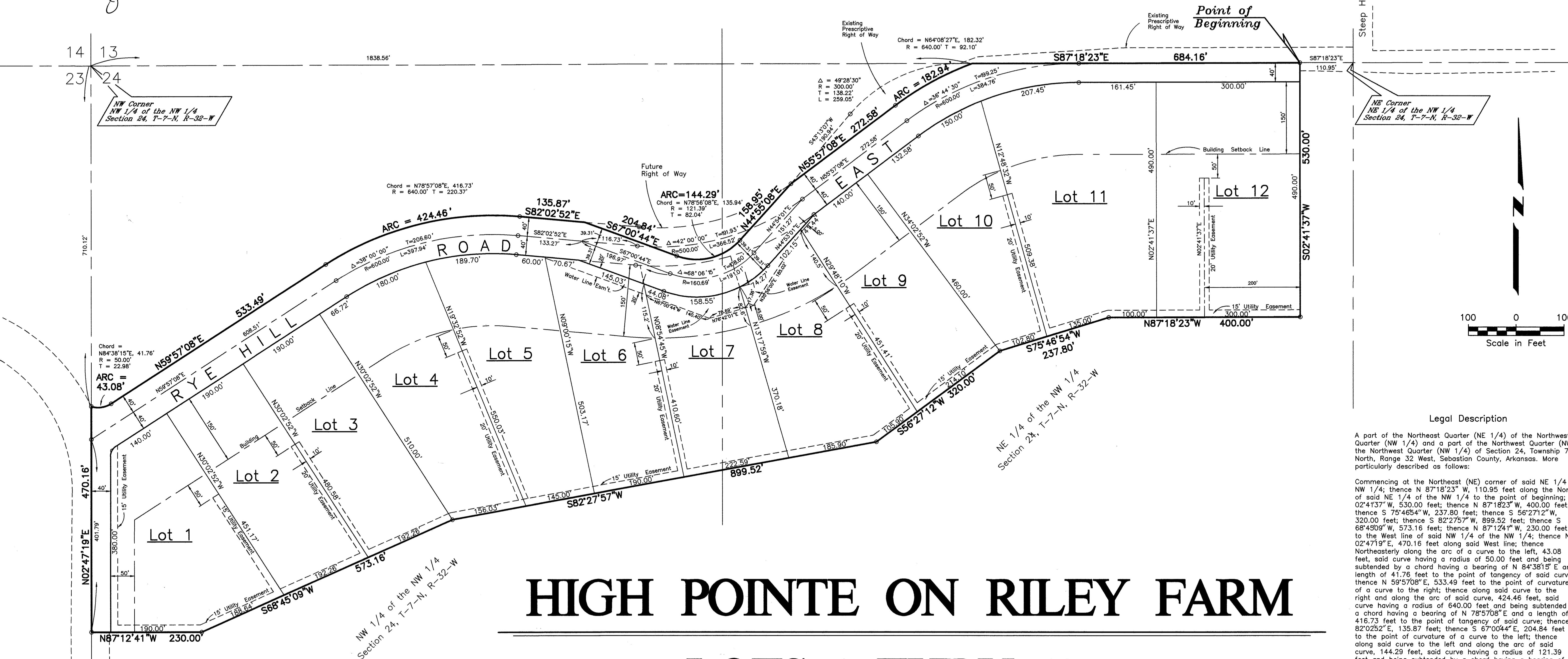
[Signatures]

STATE OF ARKANSAS
COUNTY OF SEBASTIAN: Sworn and subscribed by me
this 14th Day of October, 1998.
Notary Public: [Signature]
My Commission Expires: 3-1-2000

LEGEND	
BSL	Building Setback Line
UE	Utility Easement
Drq Esm't	Drainage Easement
S.S. Esm't	Sanitary Sewer Easement
R/W	Right-of-Way

NOTES: 1. 1/2" Iron Pins Set at Property Corners.
2. All Right of Way Return Radii 25.0'.
3. All Distances are to the Center of Curves unless Otherwise Noted.

FILED
FT. SMITH DIST.
28 OCT 15 PM 4 08
Clerk and Ex-Officio Recorder
CIRCUIT CLERK SEB. CO.



HIGH POINTE ON RILEY FARM

LOTS 1 THRU 12

A part of the NE 1/4 of the NW 1/4 and a part of the NW 1/4 of the NW 1/4 of Section 24, T-7-N, R-32-W, Sebastian County, Arkansas

Legal Description

A part of the Northeast Quarter (NE 1/4) of the Northwest Quarter (NW 1/4) and a part of the Northwest Quarter (NW 1/4) of the Northwest Quarter (NW 1/4) of Section 24, Township 7 North, Range 32 West, Sebastian County, Arkansas. More particularly described as follows:

Commencing at the Northeast (NE) corner of said NE 1/4 of the NW 1/4; thence N 87°18'23" W, 110.95 feet along the North line of said NE 1/4 of the NW 1/4 to the point of beginning; thence S 02°41'37" W, 530.00 feet; thence N 87°18'23" W, 400.00 feet; thence S 75°46'54" W, 237.80 feet; thence S 56°27'12" W, 320.00 feet; thence S 82°27'57" W, 899.52 feet; thence S 68°49'09" W, 573.16 feet; thence N 87°12'41" W, 230.00 feet to the West line of said NW 1/4 of the NW 1/4; thence N 02°47'19" E, 470.16 feet along said West line; thence Northeasterly along the arc of a curve to the left, 43.08 feet, said curve having a radius of 50.00 feet and being subtended by a chord having a bearing of N 84°38'51" E and a length of 41.76 feet to the point of tangency of said curve; thence N 59°57'08" E, 533.49 feet to the point of curvature of a curve to the right; thence along said curve to the right and along the arc of said curve, 424.46 feet, said curve having a radius of 640.00 feet and being subtended by a chord having a bearing of N 78°57'08" E and a length of 416.73 feet to the point of tangency of said curve; thence S 82°02'52" E, 135.87 feet; thence S 67°00'44" E, 204.84 feet to the point of curvature of a curve to the left; thence along said curve to the left and along the arc of said curve, 144.29 feet, said curve having a radius of 121.39 feet and being subtended by a chord having a bearing of N 78°56'08" E and a length of 135.94 feet; thence N 44°55'08" E, 158.95 feet; thence N 55°57'08" E, 272.58 feet to the point of curvature of a curve to the right; thence along said curve to the right and along the arc of said curve, 182.94 feet, said curve having a radius of 640.00 feet and being subtended by a chord having a bearing of N 64°08'27" E and a length of 182.32 feet to the point of tangency and the North line of said NE 1/4 of the NW 1/4; thence S 87°18'23" E, 684.16 feet along said North line to the point of beginning. Containing 33.39 acres more or less.

MICKLE-WAGNER-COLEMAN, INC.
Engineers Surveyors Consultants
P.O. Box 1507 Fort Smith, Arkansas
Scale: 1" = 100' October, 1998

Residential
Bill of Assurance Filed in
Book 668, Page 1966-1984

Basis of Bearings: Grid Bearings, NAD 1983,
Arkansas North Zone,
by GPS Observation.

Owner and Developer
PINEMEADOW, INC.
P.O. Box 3289
Fort Smith, Arkansas 72913